

# SAFE REMOTE CONTROL

Datasheet

**FORT**  
Foundation Series



## Control with Confidence

- ✓ Rugged controller for machines, vehicles, or robots
- ✓ Familiar game-style design
- ✓ Built-in emergency stop
- ✓ Easy to learn and operate

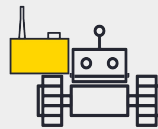
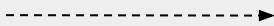
## Wireless Control for Any Machine

FORT's Safe Remote Control (SRC), part of the FORT Foundation Series, is an easy-to-use controller for wireless machine operation over ISM radio. The rugged handset features a familiar design that is easy to learn, saving valuable training time. With a built-in emergency stop, patented safety technology, and drop detection, the Safe Remote Control helps you reduce risk, prevent downtime, and maximize output for your machine.

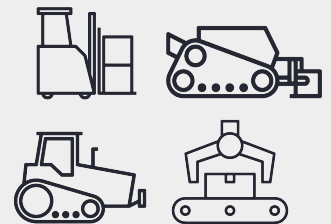
## Boost Productivity with a Safe, Intuitive Remote



Take control from a safe distance. Operators can learn to operate the game-style remote in minutes.



The Vehicle Safety Controller (VSC) receiver wires into machine's CAN bus and e-stop circuit.



Ideal for machines in a variety of industries, the rugged handset is designed for tough environments.

# SAFE REMOTE CONTROL DETAILS



## Receiver: Vehicle Safety Controller

For technical details and more information on FORT's Vehicle Safety Controller, please visit the [FORT website](#) or download the [datasheet here](#).

# SAFE REMOTE TECHNICAL SPECIFICATIONS

Part Numbers	SRC-002-2401-Y	SRC-002-901-Y	SRC-002-903-Y
<b>Device Form Factor</b>	Wireless handheld remote control		
<b>Dimensions (no antenna)</b>	181mm x 155mm x 70mm (7.17" x 6.09" x 2.76")		
<b>Base Unit Weight</b>	589g (1.3lbs)		
<b>Operating Temperature</b>	-20°C to 60°C		
<b>Charging Temperature</b>	Charges at 0°C to 45°C		
<b>Charging Voltage</b>	5V DC @ 2A (USB)		
<b>Battery Type</b>	Lithium Ion, 14.8 Watt Hours		
<b>Battery Life</b>	Up to 12 hours; Operates while charging		
<b>Connectors</b>	Mini USB-B		
<b>Inputs</b>	(1) Dual channel emergency stop button (8) buttons (2) 1-axis finger sticks (2) 2-axis joysticks		
<b>Ruggedness</b>	Designed to meet MIL-STD-810		
<b>Ingress Protection</b>	IP65		
<b>Safety Features</b>	Emergency stop button Free-fall/drop detection Orientation detection Idle controller detection- pause for unattended controls		
<b>Safety Timeout Period</b>	<b>Configured by user</b> <i>Default TX Rate: 35 ms; Default RX Timeout: 332 ms (includes latency)</i>		
<b>Regulatory</b>	E-Stop functionality designed to meet: SIL 2 (per IEC 61508) and Cat 3, PLd (per ISO 13849) Radio modules FCC & IC compliant (US & Canada)		
<b>Receiver</b>	FORT Vehicle Safety Controller (VSC) receiver (mounted or embedded versions available)		
<b>Pairing</b>	Pair 1 Safe Remote Control with 1 Vehicle Safety Controller		
<b>Pairing Interface</b>	FORT configuration tool for Linux and Windows		
<b>ISM Radio Options</b>	2.4 GHz	902-928 MHz (US, Canada)	915-928 MHz (Australia, New Zealand)
<b>Maximum Wireless Range</b> <i>May vary based on antenna placement and environment</i>	200m Line of sight	2 km Line of sight	2 km Line of sight
<b>Output Radio Transmission Power</b>	20-30dBm <i>Be sure to follow all local RF communication regulations while operating.</i>		

# SAFE REMOTE CONTROL PART NUMBERS & ACCESSORIES

<b>Safe Remote Control Handsets</b>	
<b>Safe Remote Control Handset with 2.4GHz radio</b>	<b>SRC-002-2401-Y</b>
<b>Safe Remote Control Handset with 902-928 MHz radio</b> <i>for US and Canada</i>	<b>SRC-002-901-Y</b>
<b>Safe Remote Control Handset with 915-928 MHz radio</b> <i>for Australia and New Zealand</i>	<b>SRC-002903-Y</b>
<b>Starter Kits (Bundles Including All Recommended Accessories)</b>	
<b>Starter Kit Accessory Bundle for SRC-002-2401-Y</b> <i>Includes all of the following:</i> USB Cable Type A to mini-B, 3ft USB Power Type A connector, 10W 2.4 GHz antenna, RP-SMA male Hard carrying case (black)	<b>100-0139</b>  100-0029 270-0004 275-0003 400-0006
<b>Starter Kit Accessory Bundle for SRC-002-901-Y and 903-Y</b> <i>Includes all of the following:</i> USB Cable Type A to mini-B, 3ft USB Power Type A connector, 10W 750-950 MHz antenna, RP-SMA male Hard carrying case (black)	<b>100-0138</b>  100-0029 270-0004 275-0002 400-0006
<b>Individual Accessories</b>	
<b>USB Cable Type A to mini-B, 3ft</b>	<b>100-0029</b>
<b>USB Cable, Type A to mini-B, 6ft</b>	<b>250-0160</b>
<b>USB Power Type A connector, 10W</b>	<b>270-0004</b>
<b>750-950 MHz antenna, RP-SMA male</b>	<b>275-0002</b>
<b>2.4 GHz antenna, RP-SMA male</b>	<b>275-0003</b>
<b>Standard hard carrying case (black)</b>	<b>400-0006</b>
<b>Large hard carrying case (yellow)</b>	<b>400-0049</b>

# FORT ROBOTICS CONTROL PLATFORM

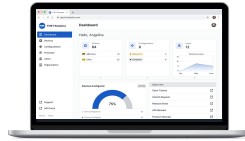
## Pro Series



Safe Remote Control Pro



Endpoint Controller



FORT Manager



Nano Safety Controller Pro  
*Coming Soon*



Wireless E-Stop Pro  
*Coming Soon*

## Foundation Series



Safe Remote Control



Vehicle Safety Controller



Wireless E-Stop



Wired Remote Control

## Professional Services

